

## KS1 Year 1 and 2

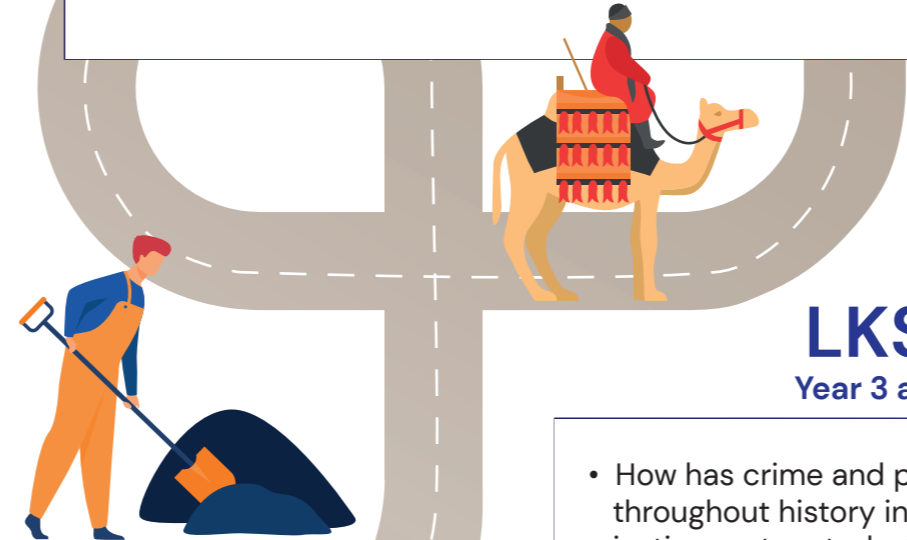
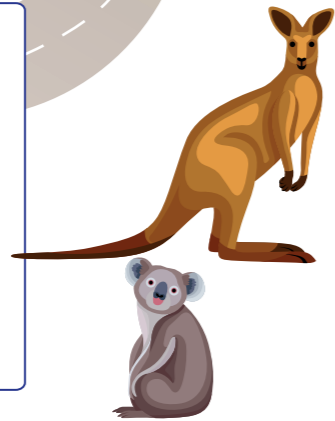
- Why was the Magna Carta important for English people?
- Why is it important to remember the people who have been affected by conflict?
- How has liquorice been good for the people of Pontefract?
- Has technology changed our lives for the better?
- Why is David Attenborough important to the natural world?
- How has Stephen Irwin helped the natural world?
- How have me and my family changed over time?
- How did Neil Armstrong impact the world?
- How did Amundsen and Scott impact the world?
- Why was coal mining important to Pontefract?
- Is equality easy to achieve?
- How did the Great Fire of London change the way England looks now?

## UKS2 Year 5 and 6

- How has space travel developed since the mid-1950s to modern day?
- How did the early Islamic civilisation become such a major world power?
- How has the Victorian period impacted modern day society?
- To what extent did the ancient Greeks impact modern day society?
- How were people impacted during World War II?
- What were the differences in aspects of life for different people across the Stone Age, Bronze Age and Iron Age?

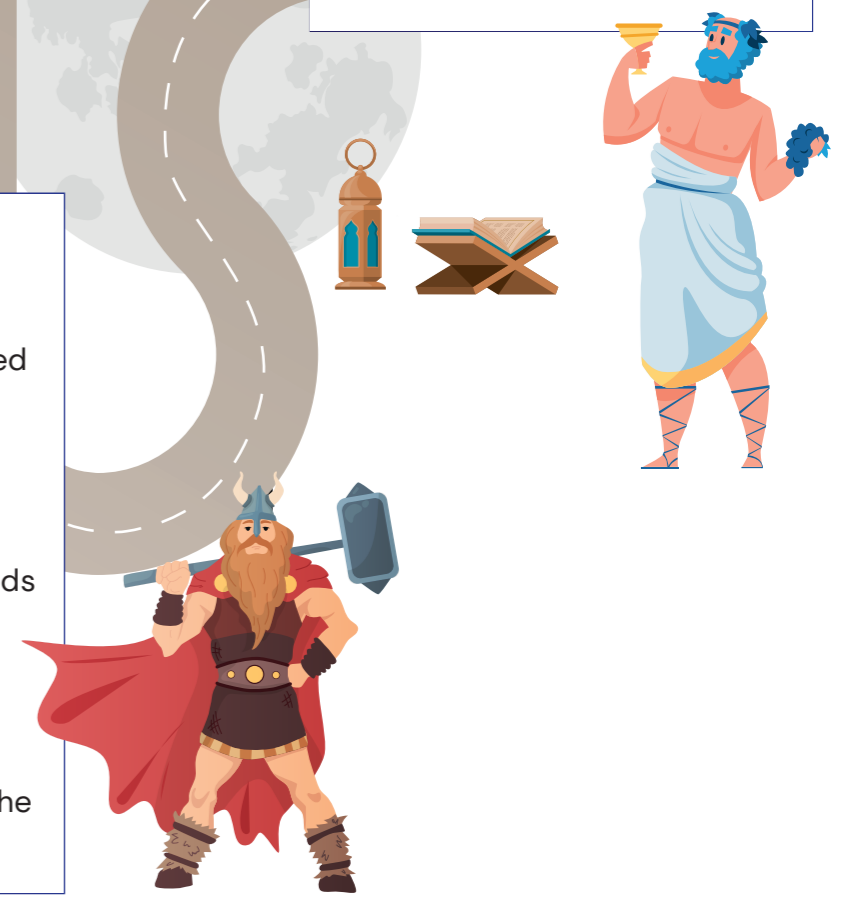
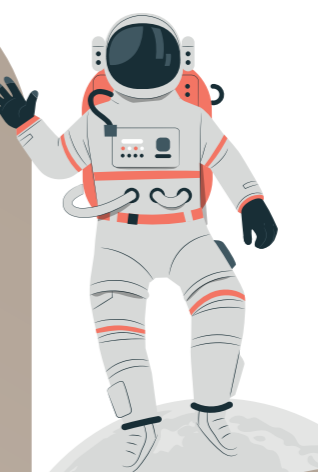
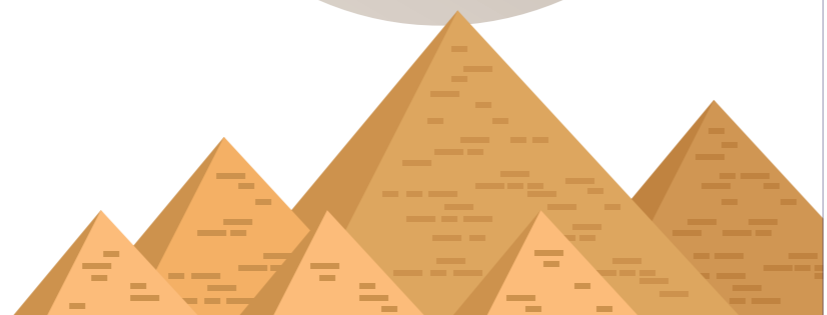
## EYFS Nursery and Reception

- I wonder who I will become?
- I wonder what is important to my community?
- I wonder who shares our home?
- I wonder how the world needs me?
- I wonder who shares our world?



## LKS2 Year 3 and 4

- How has crime and punishment throughout history inspired the British justice system today?
- How has the Maya civilisation influenced modern day society?
- How did life vary for different people within the Egyptian civilisation?
- How did the Roman invasion have a lasting impact upon Britain?
- How did Viking life differ to other periods of history?
- How did Pontefract play a role in modern-day democracy?
- How did the Anglo-Saxon invasion impact Britain today?
- What were the key events that led to the start of World War II?





## EYFS

Nursery and Reception

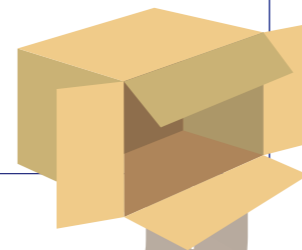
- I wonder who I will become?
- I wonder what is important to my community?
- I wonder who shares our home?
- I wonder how the world needs me?
- I wonder who shares our world?



## KS1

Year 1 and 2

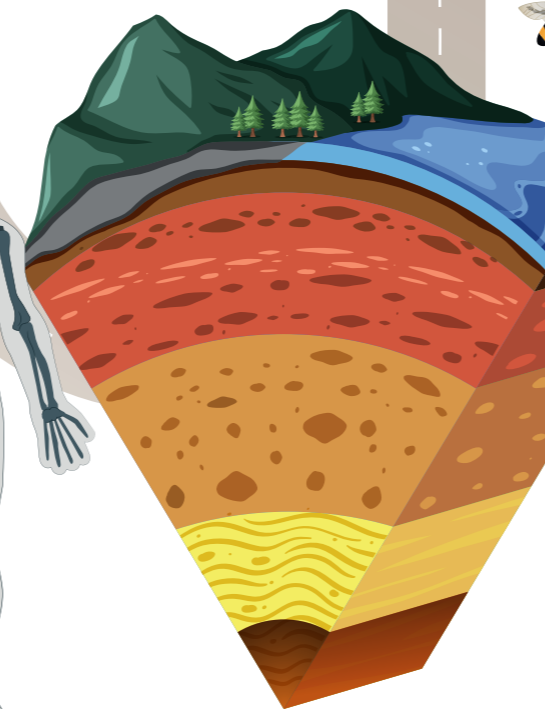
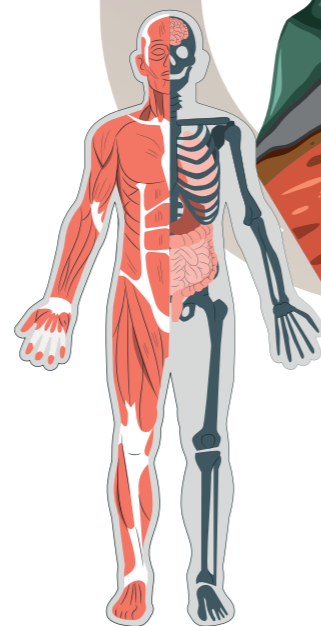
- Which sense is the most useful?
- How might we know what season it is?
- What is most important for animals to survive?
- What is the best material to create a floating mode of transport?
- Why don't polar bears live in the desert?
- Why is it useful to know which plants are in our local area?
- Who's the healthiest person in the world?
- Are all animals the same?
- What do animals eat?
- Can a box be made from any material?
- How do plants grow from a seed or bulb?
- How might we know what season it is?



## LKS2

Year 3 and 4

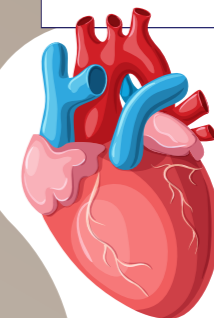
- What might happen if there were no plants?
- If we cannot see electricity, how do we know it is there?
- Why are bees important to the survival of other living things?
- How do we hear sound?
- How can the actions of humans affect living things?
- What can rocks tell us?
- How do states of matter matter?
- How do magnets work?
- How does light affect what we see?
- How do our bodies move and function?

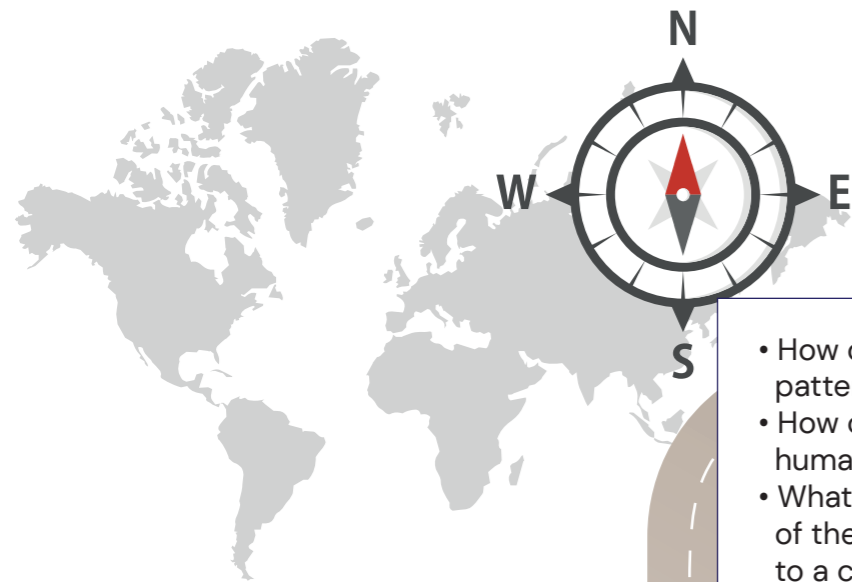


## UKS2

Year 5 and 6

- Do we need the sun to tell the time?
- How does light travel?
- How do plants and animals reproduce?
- Are humans animals?
- How can we make forces work for us?
- What makes a change irreversible?
- How small can an animal be?
- How can you make bulbs brighter?
- Will humans ever stop evolving?
- Why does our heart rate increase when we exercise?





## EYFS

Nursery and Reception

- I wonder who I will become?
- I wonder what is important to my community?
- I wonder who shares our home?
- I wonder how the world needs me?
- I wonder who shares our world?



## KS1

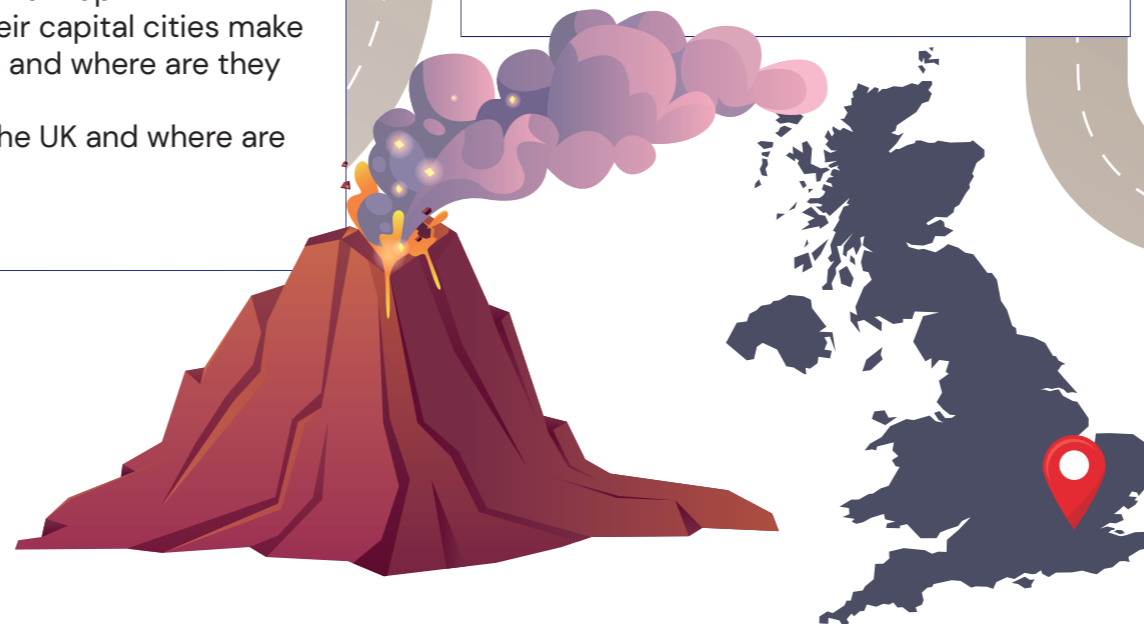
Year 1 and 2

- How do the seasonal and daily weather patterns change throughout the year?
- How can a compass be used to locate human and physical features on a map?
- What are the human and physical features of the local area and how do they compare to a contrasting place?
- What are the human and physical features of the school and local area?
- How do key features differ between the UK and Kenya?
- Where are the seven continents and five oceans of the world located?
- What are the seven continents of the world?
- Where are the hotter/colder continents located in relation to the equator?
- Where are the five oceans of the world located?
- How can the four main compass points be used to describe the location of places on a map?
- Where are the southern and northern hemispheres located on a map?
- What countries and their capital cities make up the United Kingdom and where are they located?
- Which seas surround the UK and where are they located?

## LKS2

Year 3 and 4

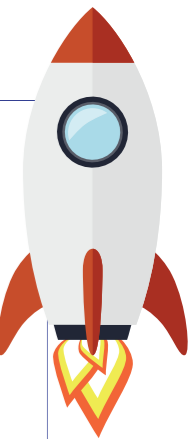
- How can a compass help to locate countries around the world?
- How can map reading skills be beneficial to creating maps of my local area?
- How is Fairtrade helping climate change?
- How do the human and physical geographical features differ between different countries within South America?
- How do the human features and physical features differ between a region in South America and the United Kingdom?
- How do volcanoes and earthquakes shape people's lives?
- How does the water cycle impact the planet and the people living here?
- How do biomes influence the habitats of the plants and animals?
- How does London and the UK geographically compare to other capital cities and countries in Europe?
- How do the features of famous rivers benefit civilisations?
- How does the location of countries and cities in the United Kingdom shape our lives?



## UKS2

Year 5 and 6

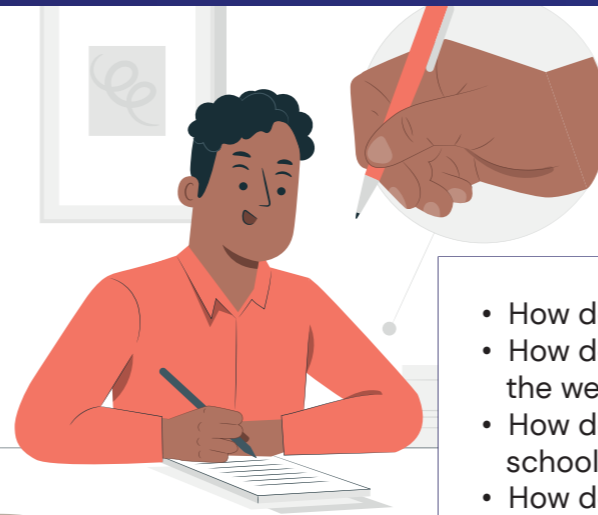
- How is a suitable rocket launch site selected to be geographically fit for purpose?
- How has trading between Syria and the UK impacted the economic growth and relationship between the two countries?
- What is the significance of the geographical positioning of mountains and rivers around the world?
- What is the impact of key geographical divisions on the positionality and time zones of countries around the Earth?
- How has globalisation impacted the way countries trade and what is its environmental impact?
- Why are positional directions vital in the understanding of geographical locations?



# Learning Journey: Spanish



- How do people in Spanish speaking countries greet each other?
- How do you introduce yourself in Spanish?
- How do you say numbers in Spanish?
- How do you say the days of the week in Spanish?
- How do you say colours in Spanish?
- How do I pronounce Spanish sounds?
- How do we give personal details in Spanish?
- How do I tell someone when my birthday is?
- How do I describe my physical appearance?
- How do I say family members in Spanish?
- How do I say what pets I have?
- How do I express what I like to do in my spare time?



## UKS2

Year 5 and 6

- How do I say which food I like and dislike?
- How do I tell someone the date and what the weather is like?
- How do I say what I am going to do after school in Spanish?
- How do I describe where I live?
- How do I describe the area that I live in?
- How do I describe my local area?
- How do I start my day?
- How do I spell my name in Spanish?
- How do I describe what I am wearing?
- How do I describe my family?
- What different ways can you travel around?
- What do I want to be when I grow up?





## EYFS

### Nursery and Reception

- I wonder who I will become?
- I wonder what is important to my community?
- I wonder who shares our home?
- I wonder who shares our world?
- I wonder how the world needs me?



## KS1

### Year 1 and 2

- What do Christians believe?
- How do we celebrate special and sacred times?
- What do Muslims believe?
- How and why do we celebrate special times?
- How should we care for others and the world and why does it matter?
- How should we care for others and the world and why does it matter?
- What can we learn from sacred books?
- What makes some places sacred?
- What does it mean to belong to a faith community?
- Why does it mean to belong to the Jewish faith?



## UKS2

### Year 5 and 6

- How can arts and architecture express religious views?
- How can charity and generosity express religious views?
- How can Jesus inspire us?
- Can we live by the values of Jesus in the 21st Century?
- How do religious people commit to key beliefs?
- What difference does it make to believe in Ahimsa (harmlessness), Grace and Ummah (community)?
- Where could we worship?
- If God is everywhere, why go to a place of worship?
- What does it mean to be a Muslim in Britain?
- Can you follow an Islamic religion in a multi-religious society?
- Is there life after death?
- Creation & science – conflict or complimentary?



## LKS2

### Year 3 and 4

- Why is Jesus inspiring to some people?
- Why do people pray?
- Why are festivals important to religious communities?
- What can we learn from religion about deciding what is right and wrong?
- Why do people believe life is a journey?
- What does it mean to be Hindu in Britain today?
- What does it mean to be Christian in Britain today?
- What do different people believe about God?
- Why is the Bible so important to Christians today?



# Learning Journey: Design & Technology

## KS1 Year 1 and 2

- How can we use mechanisms to attract attention?
- How does design make food appealing?
- Why does animation make a product more exciting?
- How and why do engineers strengthen structures?
- Why do children enjoy watching puppet shows?
- How and why do tall structures stay upright?
- How does what we eat make us feel?
- Why are wheels so important?
- What dishes are traditional in Kenya?
- What factors affect the performance of a shelter?

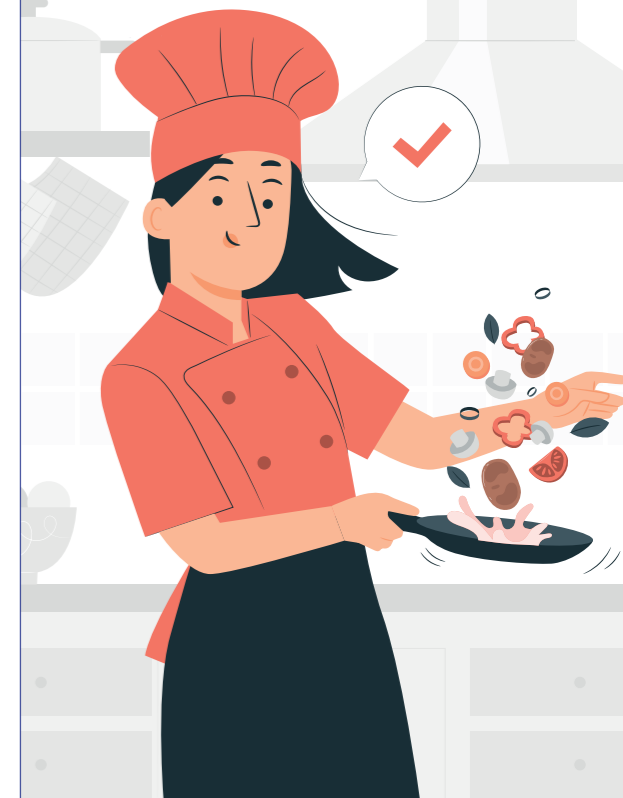


## UKS2 Year 5 and 6

- Can we make our toys think for themselves?
- How can you house two hundred (thousand) people in a day?
- How do you make a clockwork orange?
- How can we make our drawings/designs move (come alive)?
- Why and how can one person lift 5 (or 2,3)?
- How do you make the most with the least?
- Why and how could a mechanised animal model be used to support WWF?

## LKS2 Year 3 and 4

- How do we create a mechanism which will help George keep his distance from Grandma?
- How do we create an electrical circuit which will deter a burglar?
- How do we create an animated character to bring our canon text, Homework on Pluto, to life?
- How do we create chocolate like the Maya did?
- How do we create an Egyptian dish which can be consumed as part of a healthy diet?
- How do we create a strong raft which could help Fred and his friends sail to safety?
- How do we create a bag for Lila which she can use to carry her Royal Sulphur in?
- How do we create a sledge that the White Witch could use to travel across Narnia?
- How do we enhance the characters of a puppet show using levers and linkages?
- How do we create a nutritionally balanced meal for the accidental Prime Minister?
- How do we create tall, sturdy scaffolding, capable of supporting the Iron Man?
- How do we create a lighthouse which could be used to guide our WW2 warships to safety?



## EYFS Nursery and Reception

- I wonder who I will become?
- I wonder what is important to my community?
- I wonder who shares our home?
- I wonder how the world needs me?
- I wonder who shares our world?



# Learning Journey: Art



## EYFS

Nursery and Reception

- I wonder who I will become?
- I wonder what is important to my community?
- I wonder who shares our home?
- I wonder how the world needs me?
- I wonder who shares our world?



## KS1

Year 1 and 2

- How can I create a self-portrait inspired by Vincent Van Gogh?
- How can I create a still life painting based upon the work of Paul Cezanne?
- How can I create a woodland painting inspired by Monet?
- How can I create a clay sculpture of an animal inspired by local artists Henry Moore and Barbara Hepworth?
- How can I create an animal painting using a pointillism style based upon the work of Edward Tingatinga?
- How can I create a mixed media rainforest piece based upon the work of Henri Rousseau and Frederick Edwin Church?
- How can I create a piece of rock art based upon the work of the artist Robert Rizzo?
- How can I create a papier mache sculpture based upon the work of the artist Roberto Benevidez?
- How can I create an abstract layered textile piece based upon the work of Julie Shackson?
- How can I create a piece of abstract art based upon the work of Kandinsky?
- How can I create an African savannah scene based upon the work of Rosemary Karuga?
- How can I create a photograph scene of an evacuation and a life drawing of a WW2 evacuee based upon historical evacuation photographs?

## LKS2

Year 3 and 4

- How can I create a self portrait and water colour wash inspired by Quentin Blake?
- How can I apply my skills of hatching and cross hatching to create a sketch of a scene from Operation Gadget Man?
- How can I create an Antarctic scene on fabric inspired by the Mayan images?
- How can I create a clay pot inspired by the Mayans?
- How can I create a portrait of a former Egyptian leader?
- How can I create a rainforest scene inspired by the work of John Dyer and Nixiwaka Yanawawa?
- How can I create street art inspired by David Zinn and Sandrine Boulet?
- How can I create a transient sculpture inspired by Simon Beck?
- How can I create a mixed media dragon eye inspired by Aubrey Brown?
- How can I create a self portrait inspired by the work of Rembrandt?
- How can I create an applique representation of the iron giant?
- How can I create a painting inspired by David Hockney?



## UKS2

Year 5 and 6

- How can I create a representation of an aspect of space inspired by the work of contemporary spray paint artists and their galaxy-inspired pieces?
- How can I create a perspective window drawing?
- How can I use textiles techniques to create an image?
- How can I create a mixed media piece inspired by the work of Tom Porta?
- How can I create an atmospheric drawing based on the work of Henry Moore in WW2?
- How can I create a kinetic sculpture using found materials?

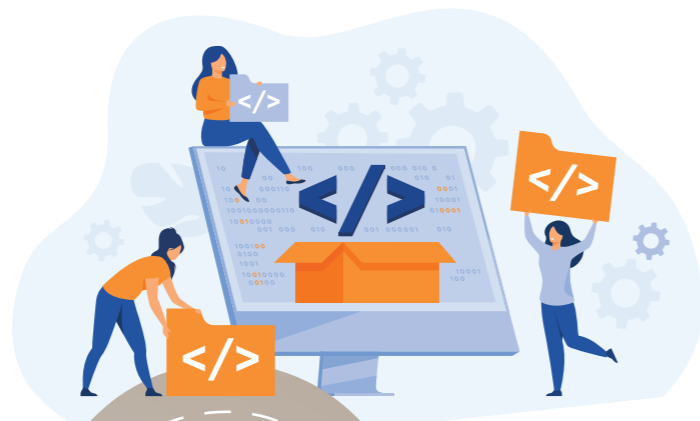
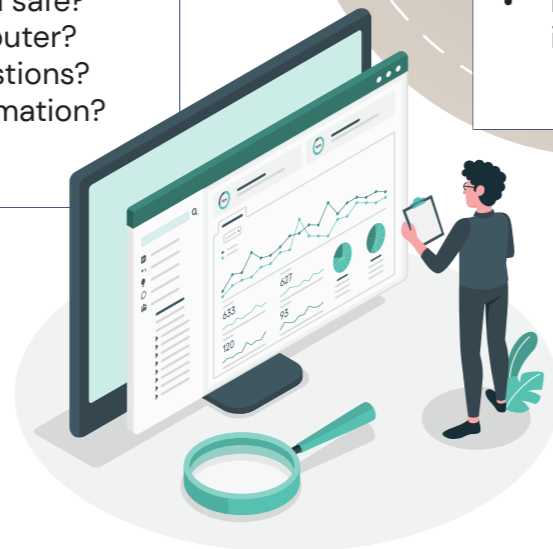


# Learning Journey: Computer Science



## KS1 Year 1 and 2

- How do I stay safe when using a computer?
- How can I represent art using a computer?
- What is an algorithm?
- How can I create a document?
- How can I create an algorithm?
- How can I organise and present information?
- How do I keep my private information safe?
- How can I represent art using a computer?
- How can I find the answer to my questions?
- How can I organise and present information?



## LKS2 Year 3 and 4

- How do I keep my private information safe and what do I do if come across inappropriate content?
- How can I create an animation using a computer?
- How do I use algorithms to create shapes and patterns?
- How can I use technology to advertise an invention?
- How do I use code to create accurate outcomes based on specific selections?
- How can I create my own electronic greetings card?
- How can the Water Cycle be shown using stop-motion animation?
- How do I use an algorithm to create shapes and patterns?
- How can I re-create a story using Microsoft PowerPoint and search engines?
- How do I use code to create accurate outcomes based on specific selections?
- How do I present credible and reliable information?



## UKS2 Year 5 and 6

- How do I keep myself safe online?
- How do I create my own podcast?
- How do I use algorithms to create a complex maze game?
- How can I use technology to create a 3D vessel?
- How can I create an animated story based on a scene from a book?
- How can I advertise my maze game?
- How do I identify safe and reliable information?
- How can documentaries be used to share information?
- How do I design a sequenced algorithm that includes repetition?
- How can I use data within Microsoft Excel?
- How can I present facts and events from the book Mortal Engines?





# Learning Journey: Music

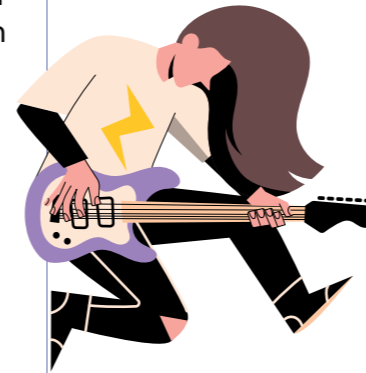


## EYFS Nursery and Reception

- I wonder who I will become?
- I wonder what is important to my community?
- I wonder who shares our home?
- I wonder how the world needs me?
- I wonder who shares our world?

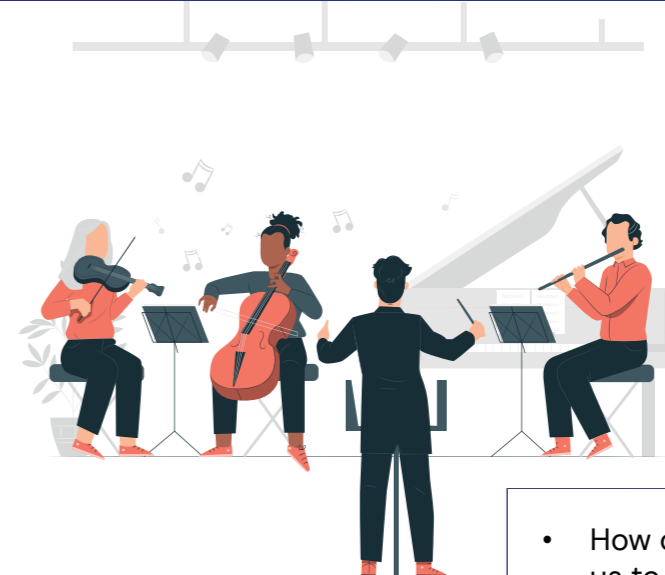
## KS1 Year 1 and 2

- How can the physical and emotional impact of music bring us closer with people?
- How do the inter-related dimensions of music impact our voices in music?
- How are the inter-related dimensions of music used in Rock music?
- How does technology impact the role of a musician?
- How do different cultures interrupt music?
- How does music teach us about looking after our planet?
- How does your imagination help you to appreciate and create music?
- What makes an expressive and effective performance?
- How do you use a tuned and untuned instrument creatively?
- How is music used in film to create emotion?
- How can improvisation be used in the creation of music?
- Why is repetition of a melody important?



## LKS2 Year 3 and 4

- How do the inter-related dimensions impact singing in musical theatre
- How does music improve our world?
- How does music connect us with the environment?
- How does the idea of 'God' impact the musical structure?
- How does improvisation impact the melody of songs?
- How does technology impact the message of music to spread awareness?
- How do composers use inter-related dimensions of music to influence their style?
- What effect can singing in a choir have on a performance?
- How do the inter-related dimensions of music impact a composition?
- How does instrumentation explore a musical story?
- How does using a graphic score impact the inter-related dimensions of music?
- How does singing in unison impact performing as an ensemble?



## UKS2 Year 5 and 6

- How can the music of others inspire us to write our own compositions?
- How can I change a piece of music to make it feel like my own?
- Why is improvisation and an understanding of a range of music styles important when composing?
- How would you describe the key components of the rock music genre?
- What did popular wartime music sound like?
- Why is improvisation and an understanding of a range of music styles important when composing?

